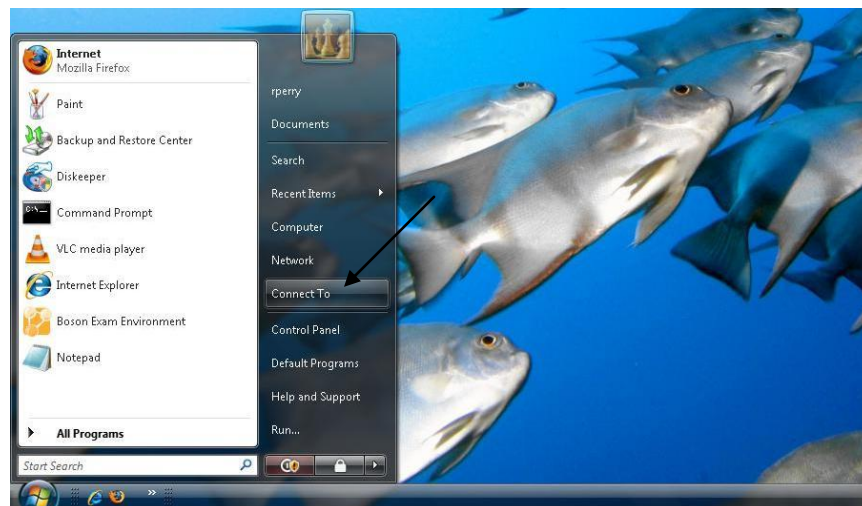




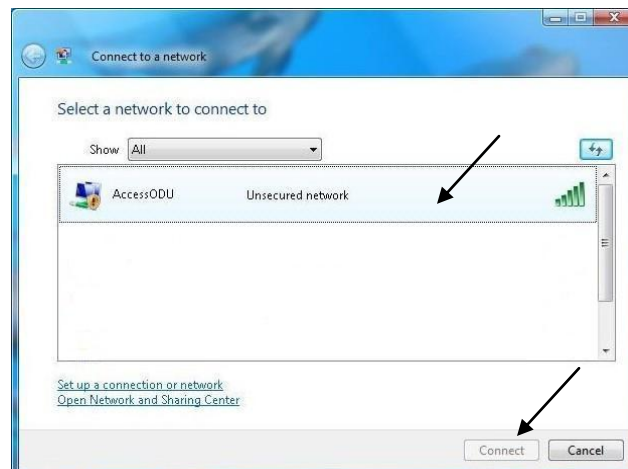
Connecting to Old Dominion University “AccessODU” Wireless Network Windows Vista Users

Configuring the Wireless Network Connection Properties

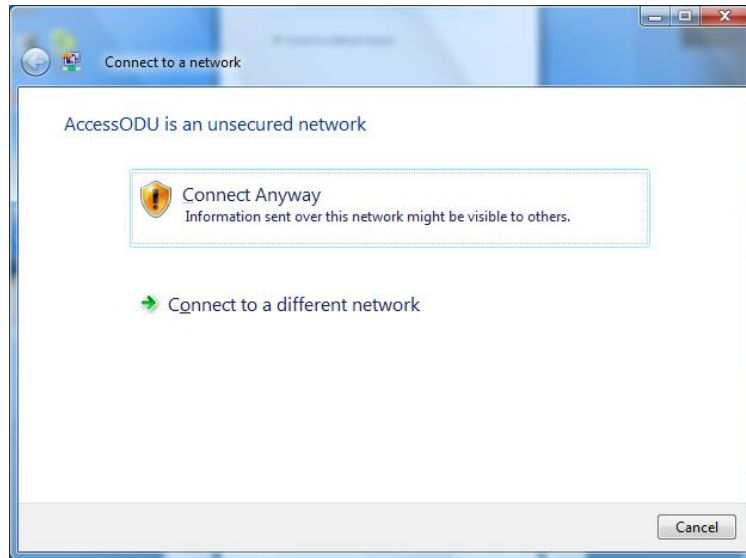
1. Be sure the wireless NIC is turned on and the most current drivers are installed on your computer.
2. Click the **Windows Logo** button in the bottom left of your task bar, select **Connect To**.



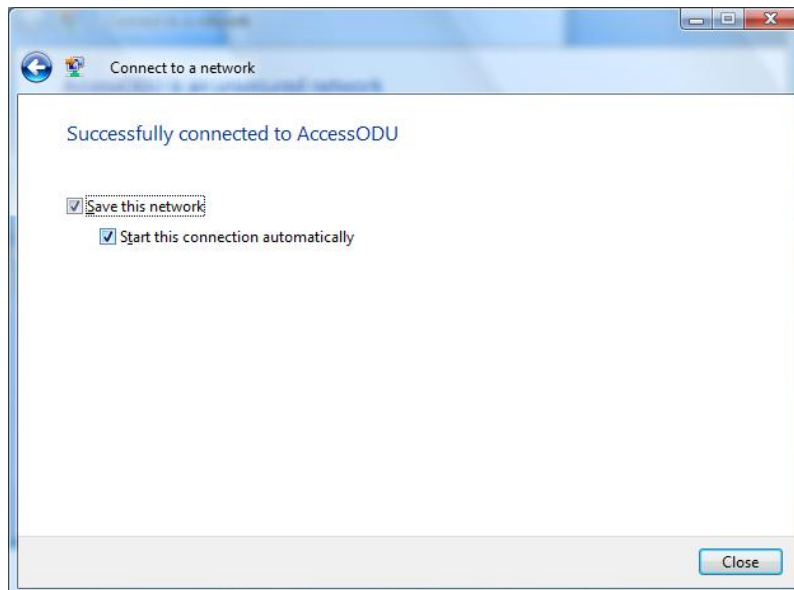
3. Select the **AccessODU** network and then click the **Connect** button.



4. Click **Connect Anyway**.

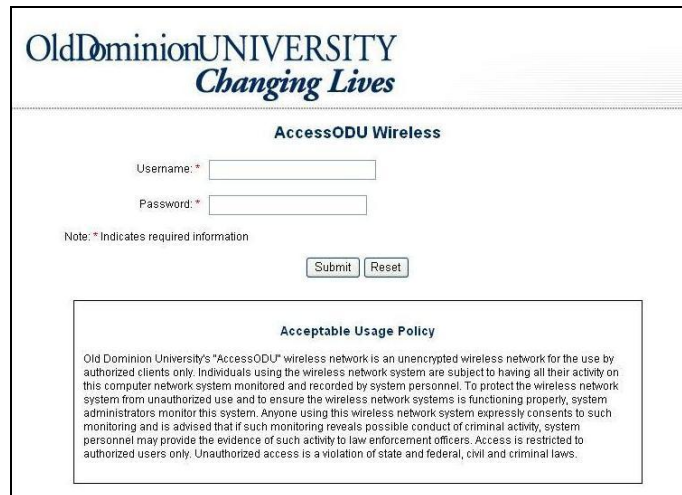


5. Put a checkmark in the **Save this network** and the **Start this connection automatically** boxes. Click **Close**.



Logging into the AccessODU Wireless Network

1. When you open a browser, you will be redirected to an authentication page.



The screenshot shows the authentication page for Old Dominion University's AccessODU Wireless network. At the top, the university's logo is displayed with the tagline "Changing Lives". Below the logo, the text "AccessODU Wireless" is centered. There are two input fields: "Username: *" and "Password: *", both with asterisks indicating required information. Below these fields is a note: "Note: * Indicates required information". At the bottom of the form area are two buttons: "Submit" and "Reset". Below the form area is a section titled "Acceptable Usage Policy" which contains a paragraph of text regarding network security and monitoring.

2. Enter all the information required and click **Submit**.
3. After successfully authenticating, you should be redirected to your homepage and now have full access to the internet.

Note: When you launch a web browser, you will not be redirected to the authentication page until you try to access a web site. Also, if your browser's homepage is set to a secure webpage ("**https**"), you will not be automatically redirected to the authentication page. Please try entering a non-secure webpage (ex. <http://www.odu.edu>) to be redirected to the authentication page.